

# RapidLink Extreme

Outdoor-ready Wireless Networking Technology for OEM  
and Systems Device Developers



Encased in a rugged, to military specifications, die cast NEMA 6X/IP67 enclosure, RapidLink Extreme is ready to hit the road on outdoor deployments or wherever your design application takes you.

RapidLink Extreme is the complete high performance, mobile, and portable wireless mesh solution.

Each RapidLink Extreme node is ready for your ultimate test, whatever it may be. Instantly deployable, it's the logical choice for critical applications—whether temporary or emergency in nature—that must work, no matter what the situation.

#### **Instant mesh networks**

RapidLink Extreme automatically detects and connects with in-range peers to create a self-discovering wireless mesh network capable of 54 Mbps connection speeds.

#### **Interoperable**

RapidLink Extreme nodes are plug-and-play compatible with the entire RapidLink product family and devices that conform to the IETF open-standard OLSR routing protocol. Adapting or extending the RapidLink platform to your application is intuitively easy.

#### **Rugged**

With an operating range of -10° to 80° Celsius, environmentally sealed power-over-Ethernet connectors, and military-spec product design, RapidLink Extreme is ready for the toughest of conditions.

#### **Self-Healing**

RapidLink networks heal themselves. Failed nodes and other obstructions are automatically detected and bypassed.

#### **Secure**

RapidLink routers use military-grade 168-bit ciphers including Triple Data Encryption, IPsec, and an alphabet soup of other protections.

#### **Manageable**

RapidLink offers both integrated web access and centralized RapidView network management tools. Choose the solution that works best for you.

**Concentris**  
systems

# RAPIDLINK EXTREME SPECIFICATIONS

## Wireless

Modes: 802.11a/b/g

Frequency Range:

- 2.400 - 2.483GHz
- 5.15 - 5.35Ghz
- 5.725 - 5.825GHz
- Military and Public Safety Bands available

Output Power:

- 802.11b:18dBm
- 802.11g:18dBm
- 802.11a:17dBm

Antenna: Dualband omnidirectional (2)

## Input/Output

Antenna Connector: N-Type (2)

Ethernet: 10/100 Base-TX (1)

## Processor and Memory

Processor: Intel XScale PXA 270 @ 520 MHz

SDRAM: 128 MB SDRAM

Flash: 512MB

## Software

API: Java-based

Operating System: Embedded Linux

## Security

WEP Keys: 40 bit, 104 bit

AES Keys: 128 bit, 256 bit

WPA2 encryption

VPN tunneling and filtering

NAT

FIPS 140-2 (certification pending)

## Client Access

Roaming access enabled

Zero user configuration

VLAN support

Up to three SSIDs per radio

## Management/Configuration

Embedded Management:  
WebAdmin system configurator

Centralized Management:  
RapidView Visual Network Manager

Remote firmware upgrade

Automatic AP discovery

## Electrical

Input Voltage: 9-24 VDC

Consumption: 5 Watts maximum

Connector: Power Over Ethernet (PoE) capable

## Certifications

Radio: FCC part 15 and part 27

RF Safety: FCC OET Bulletin 65

CE! Mark

## Warranty

Hardware: One year limited

Software: 90 days limited

## Physical

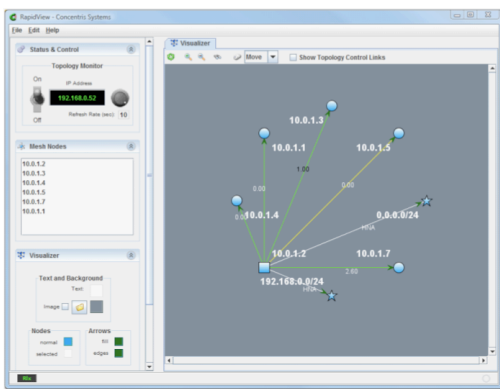
Dimensions: 21.0cm x 17.8cm x 5.1 cm

Weight: 1.12kg

Operating Temperature: -10° to 80°C

Humidity: 10-90% (non-condensing)

Heat Trap: +6.5° Celsius under full sun (approximately 100,000 lux)



Manage your RapidLink network via the RapidLink web administration tool or the powerful RapidLink Manager. RapidLink Manager optimizes node utilization, manages network traffic, and monitors the quality of RapidLink wireless network connections.

